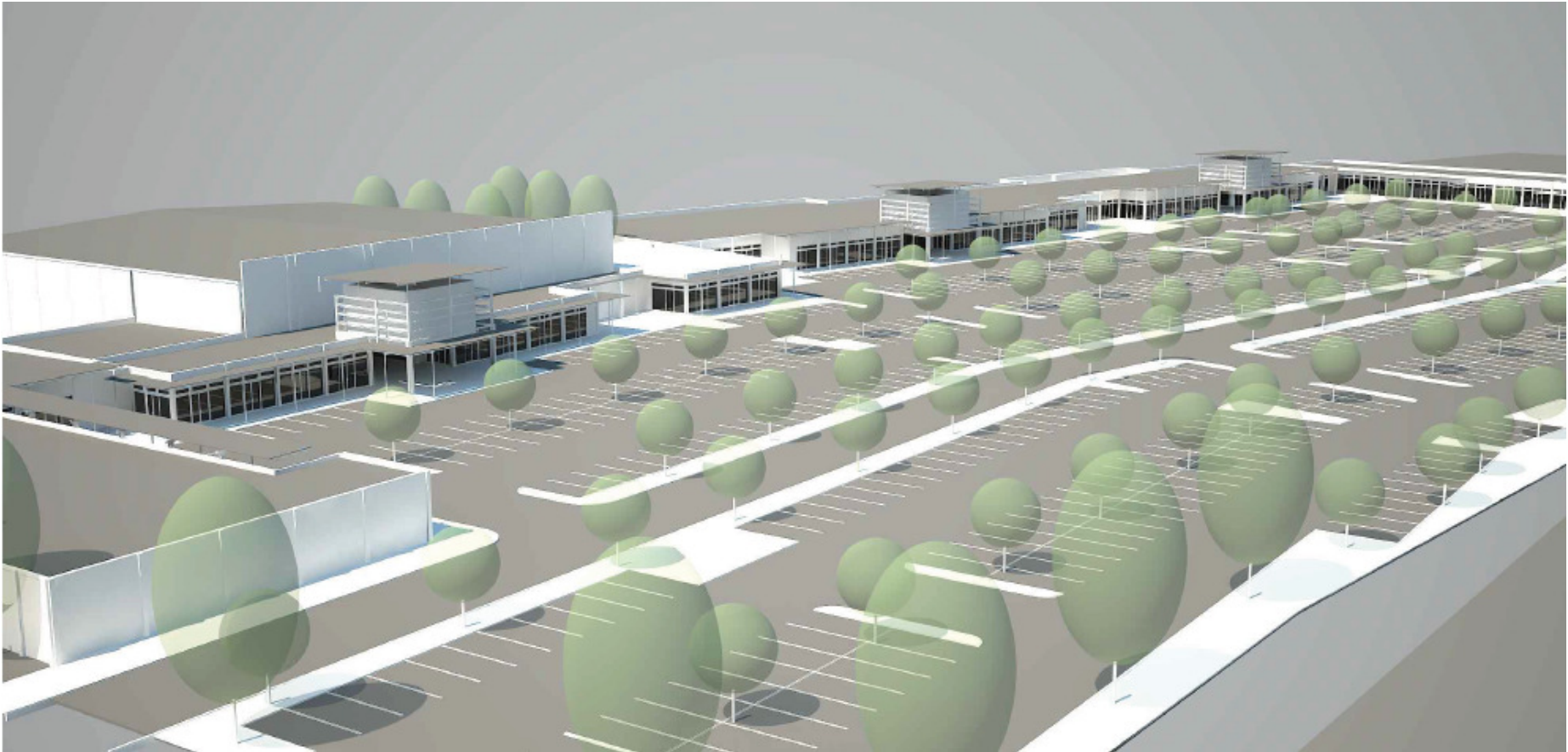


## GROOTFONTEIN TOWN CENTRE





---

## GROOTFONTEIN TOWN CENTRE

---



# GROOTFONTEIN



Grootfontein is located in the north-east of Namibia in a lush green environment. The district is abundantly endowed with wildlife and game, while the district is well known for its cattle and crop farming. The town still functions as the shipping point for timber products arriving from Kavango-inhabited areas farther to the northeast, while copper and lead mined west of Grootfontein are smelted at Tsumeb.

Grootfontein is a well-developed town and forms the gateway to the north-eastern parts of Namibia. Travelers and tourists often stop over at Grootfontein for refreshments, supplies and to rest, many a traveler and visitor is often enticed to stay a bit longer before continuing on their journey.

Apart from its historic sites and lush green peaceful atmosphere the town also boasts with some world renowned tourist attractions like:

- The **Hoba Meteorite**, discovered by Jacobus Hermanus Brits in the 1920's. It is the world's largest meteorite and weighs 60 tones.

Grootfontein is a well-developed town with an infrastructure that can cope with any development. All municipal services and well-maintained gravel and tarred roads are available.

The community is a typical multi-cultural one with all ethnic groups represented. The cosmopolitan community is mostly fluent in the official language, English while most people speak Afrikaans and/or some of the local ethnic languages.

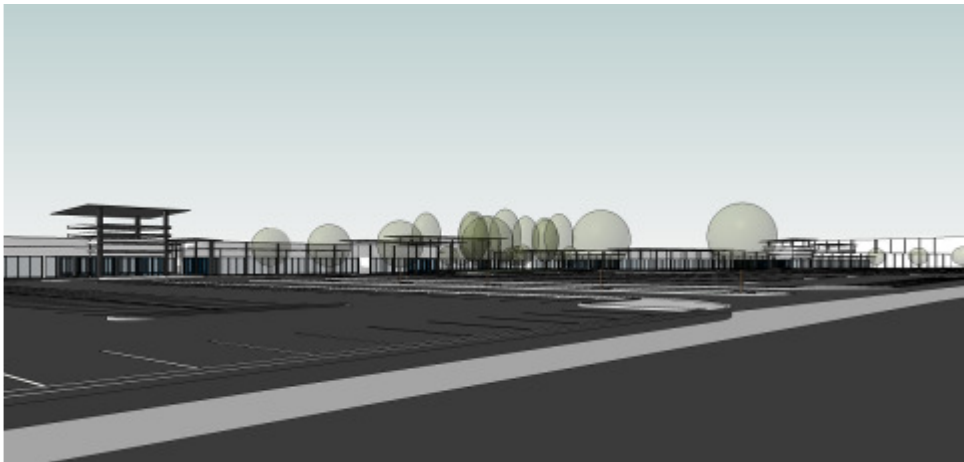
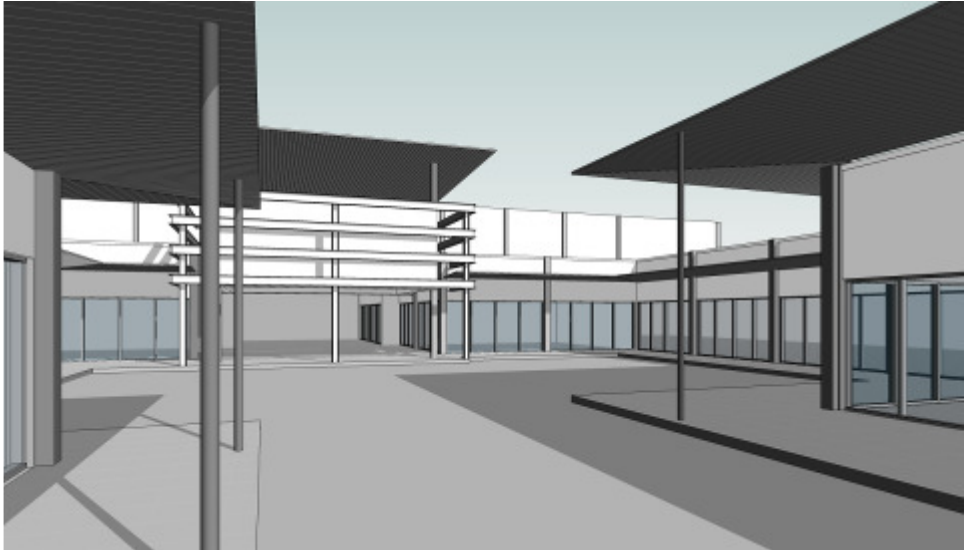
**Total population of town: 25,000**  
**Total population of district: 35,000**



## GROOTFONTEIN TOWN CENTRE



**DEVELOPMENT VISUALS**



---

# GROOTFONTEIN TOWN CENTRE

---

STACKS PROPERTY 37 (PTY) Ltd



steyn  
le roux  
truter  
architects



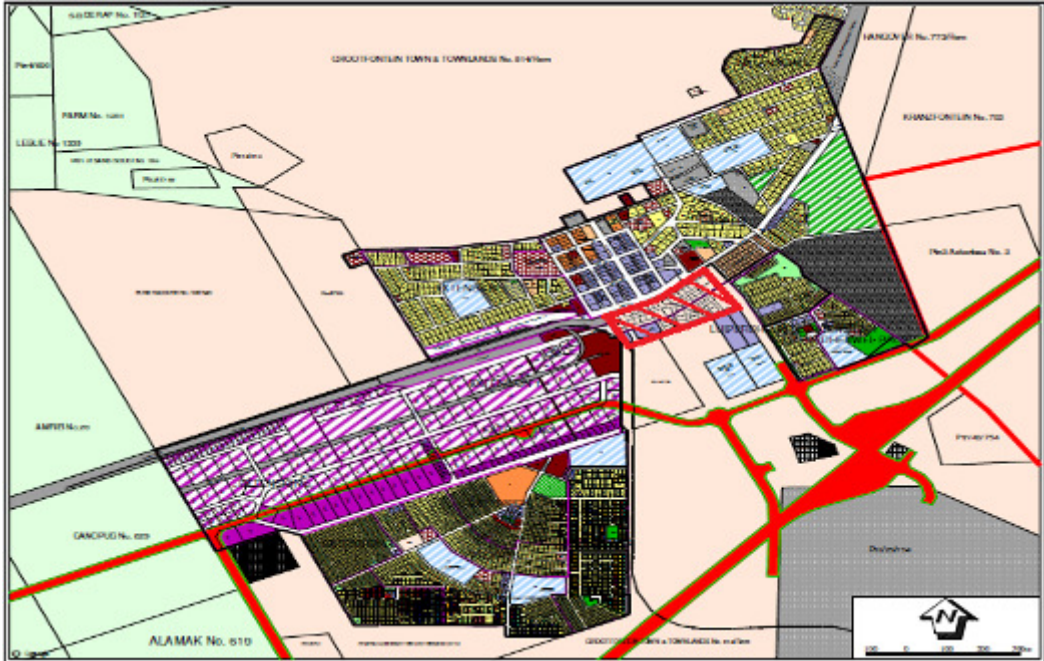
Proposed tenant mix:

Supermarket	2300sqm
Fast Food	400sqm
Restaurants	250sqm
Speciality	300sqm
Hardware	1000sqm
Pharmacy	150sqm
Furniture	800sqm
General	1000sqm
<hr/>	
<b>Total</b>	<b>approx 6000sqm</b>

Overview

Grooftern Town Centre is located in Okavango rd on the south side of the CBD opposite the main rd.

Site Location



**GROOTFONTEIN TOWN CENTRE**

KEY DATES:

- 1. Retailer input design: 07/08 (2012)
- 2. Lease Neg. concluded: 01/10/2012
- 3. Construction: 11/2012 to 10/2013
- 4. Opening: 01/11/2013

CURRENT RETAIL MAP



GROOFFONTEIN TOWN CENTRE



Retailers we're talking to:

Anchors



Fashion



Take Aways



Home, Furniture & Appliances



DIY & BMS



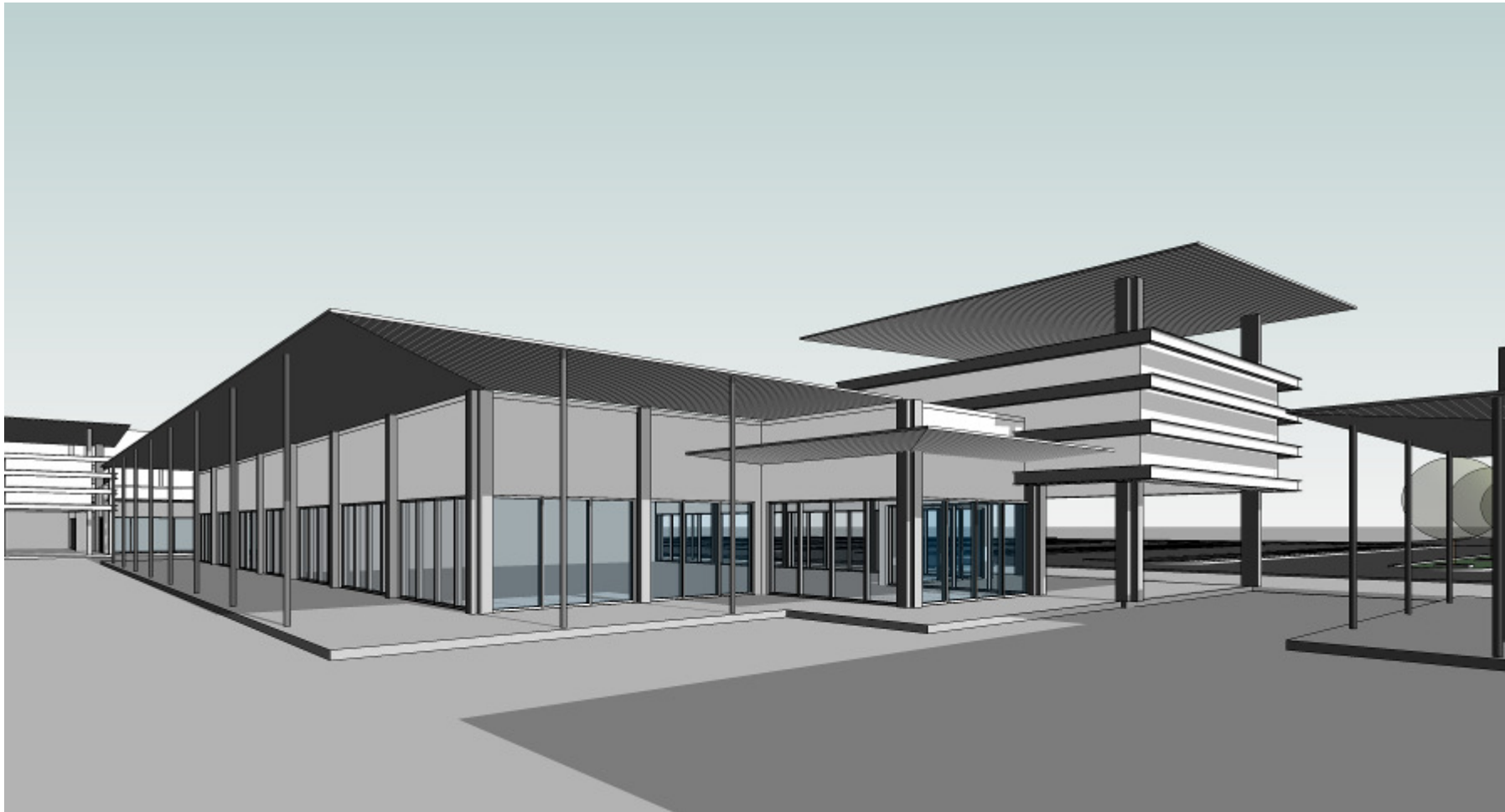
Specialty & Services





# GROOTFONTEIN TOWN CENTRE





---

## GROOTFONTEIN TOWN CENTRE

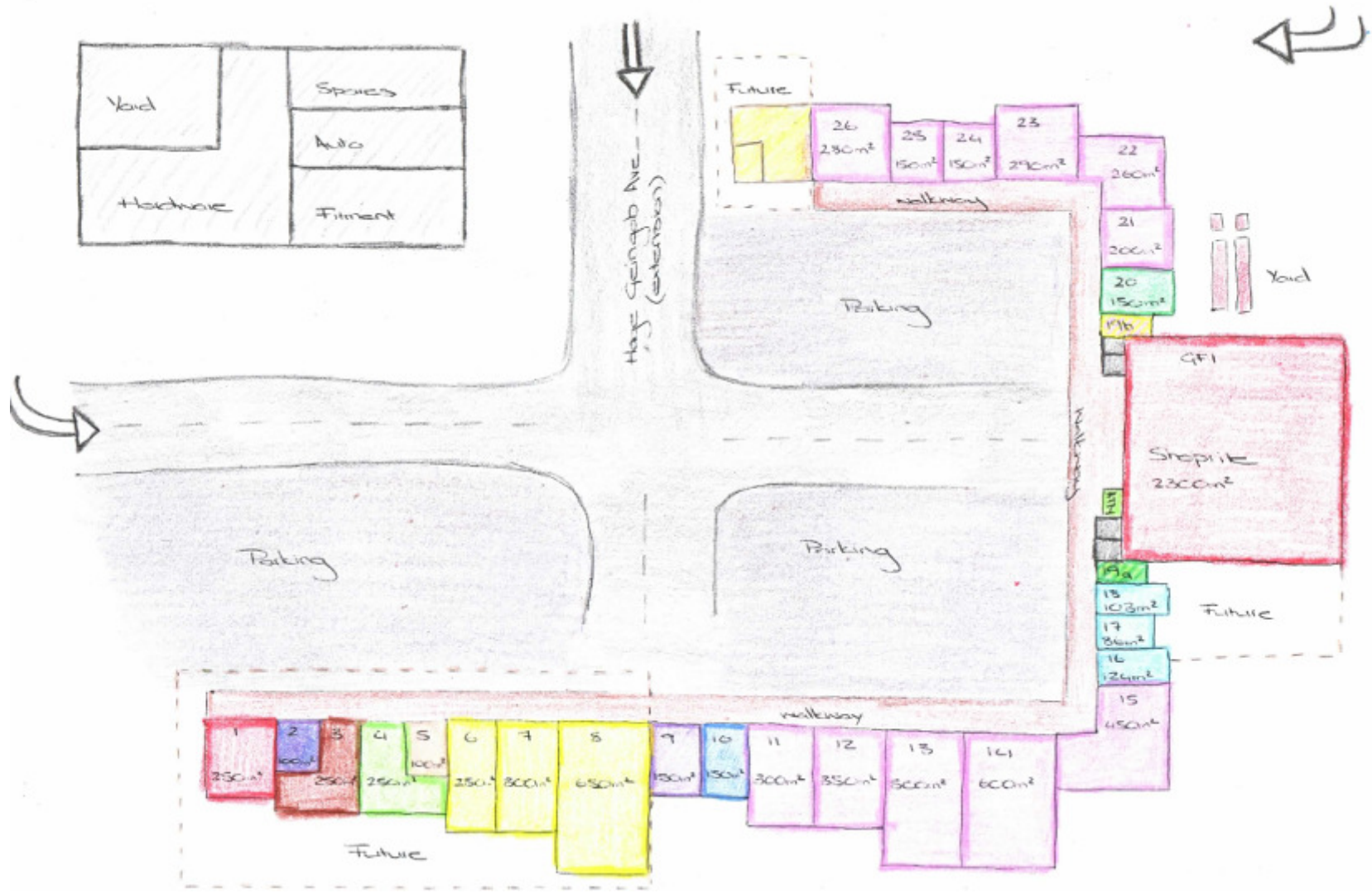
---

STACKS PROPERTY 37 (PTY) Ltd



steyn  
le roux  
truter  
architects





# GROOTFONTEIN TOWN CENTRE





# GROOTFONTEIN TOWN CENTRE



**STACKS PROPERTY 37 (PTY) Ltd**



**Alchemy**

CORPORATE PROPERTY ADVISORS

**Western Cape**

Unit 5a Pastorie Park  
Somerset West, 7130  
South Africa

## PROJECT TEAM

steyn  
le roux  
truter

architects

## FOR RETAIL LEASING ENQUIRES PLEASE CONTACT:

**STEFAN BOTMA**

STEFAN@ALCHEMYADVISORS.CO.ZA

**MICHAEL SCHIRNIG**

MICHAEL@ALCHEMYADVISORS.CO.ZA

**TARRYN SMITH**

TARRYN@ALCHEMYADVISORS.CO.ZA

---

## GROOTFONTEIN TOWN CENTRE

---